



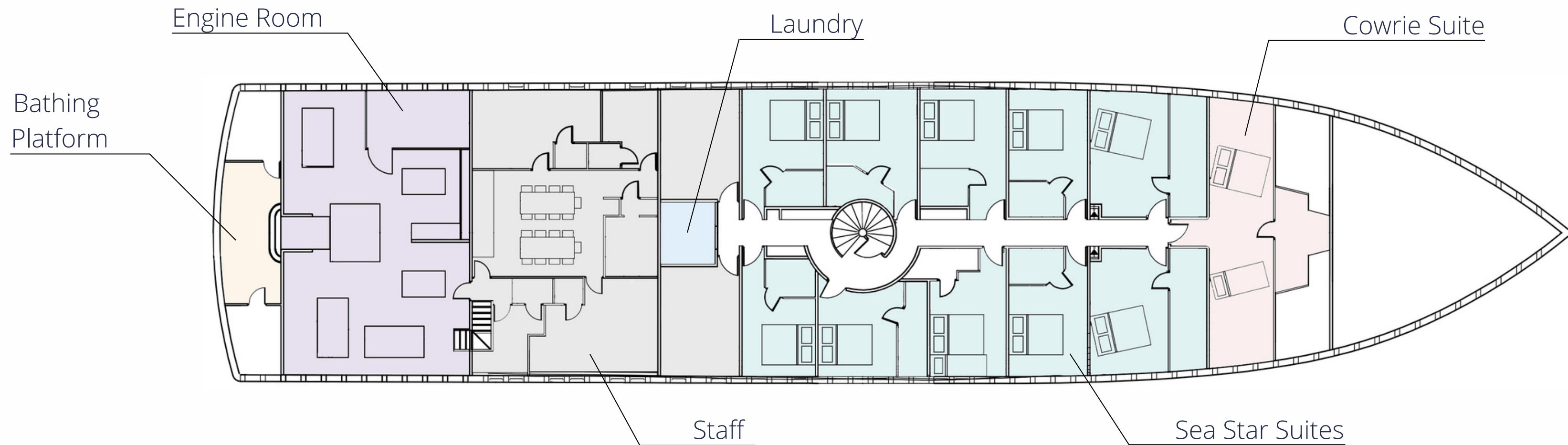
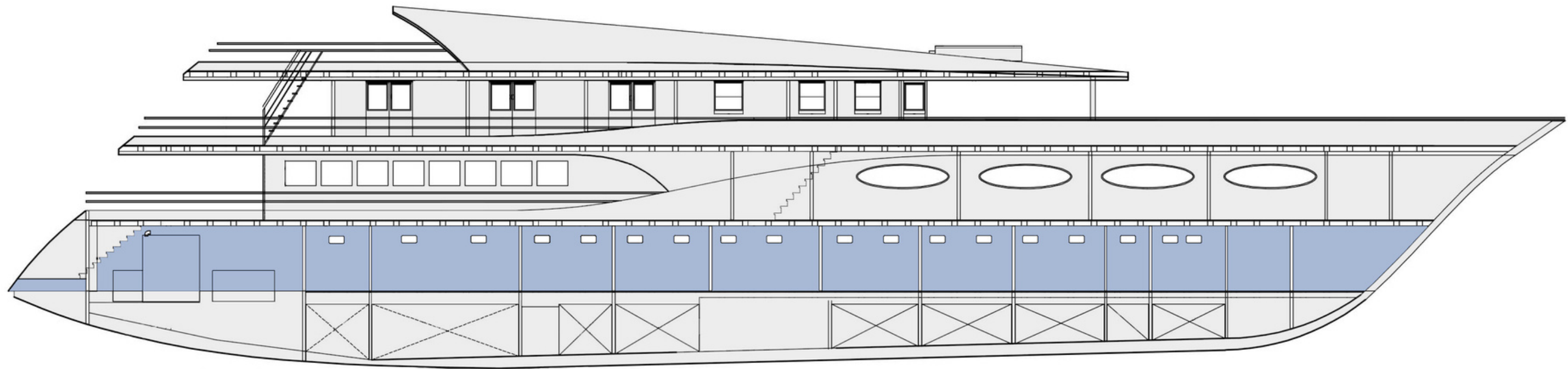
SCUBASPA  
MALDIVES



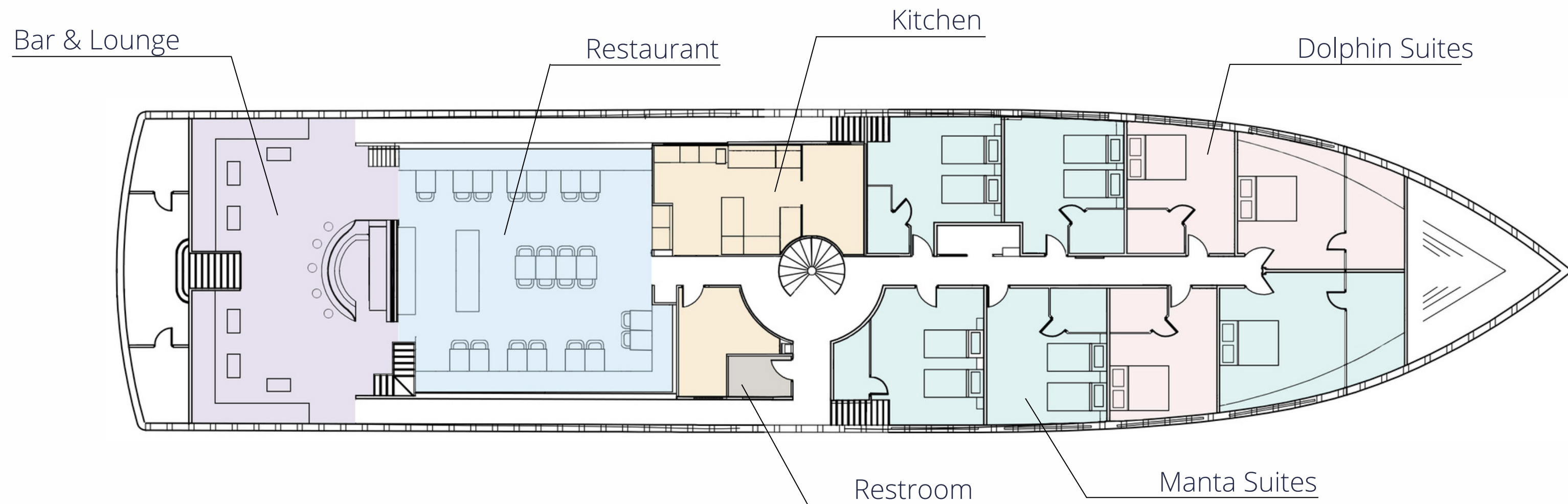
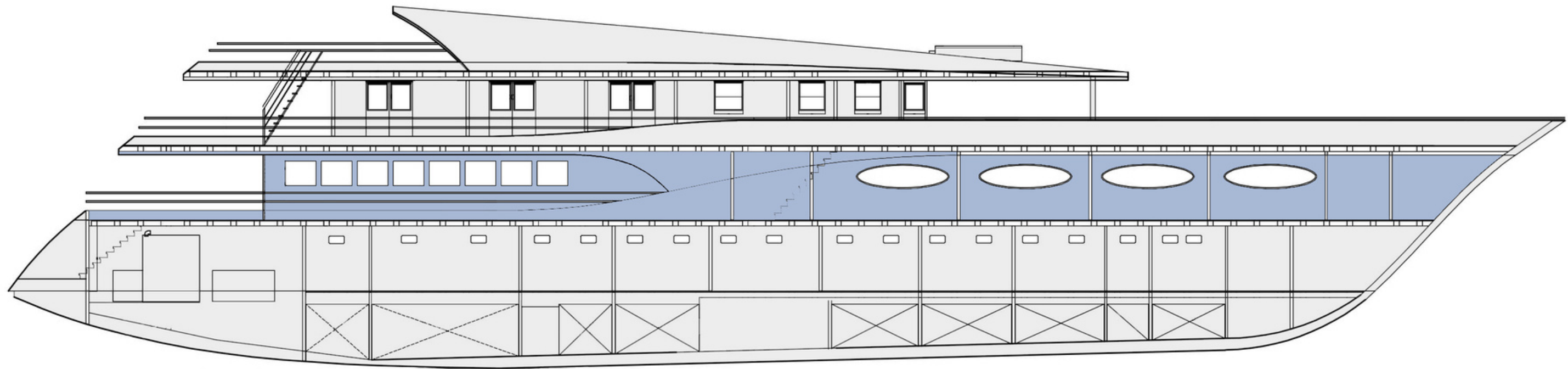
Scubaspa Yin / Scubaspa Yang

---

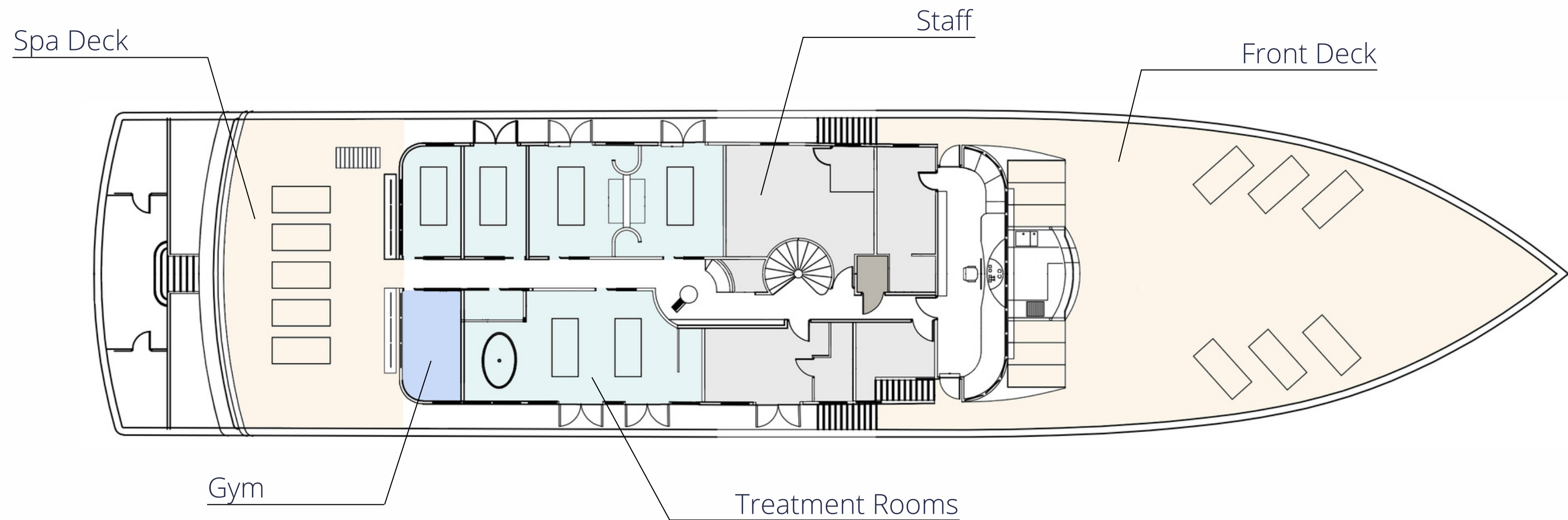
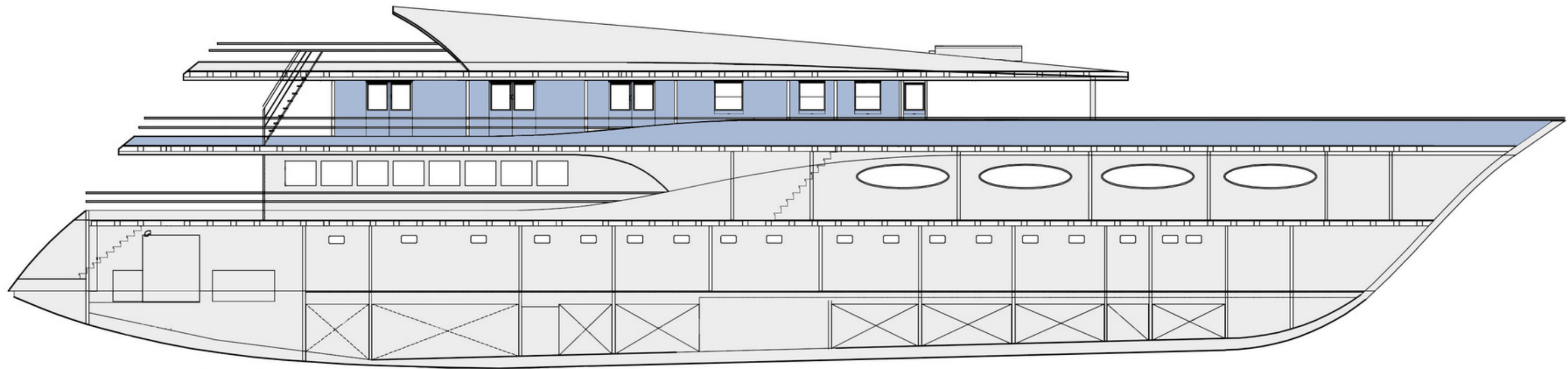
# Layout - Lower Deck



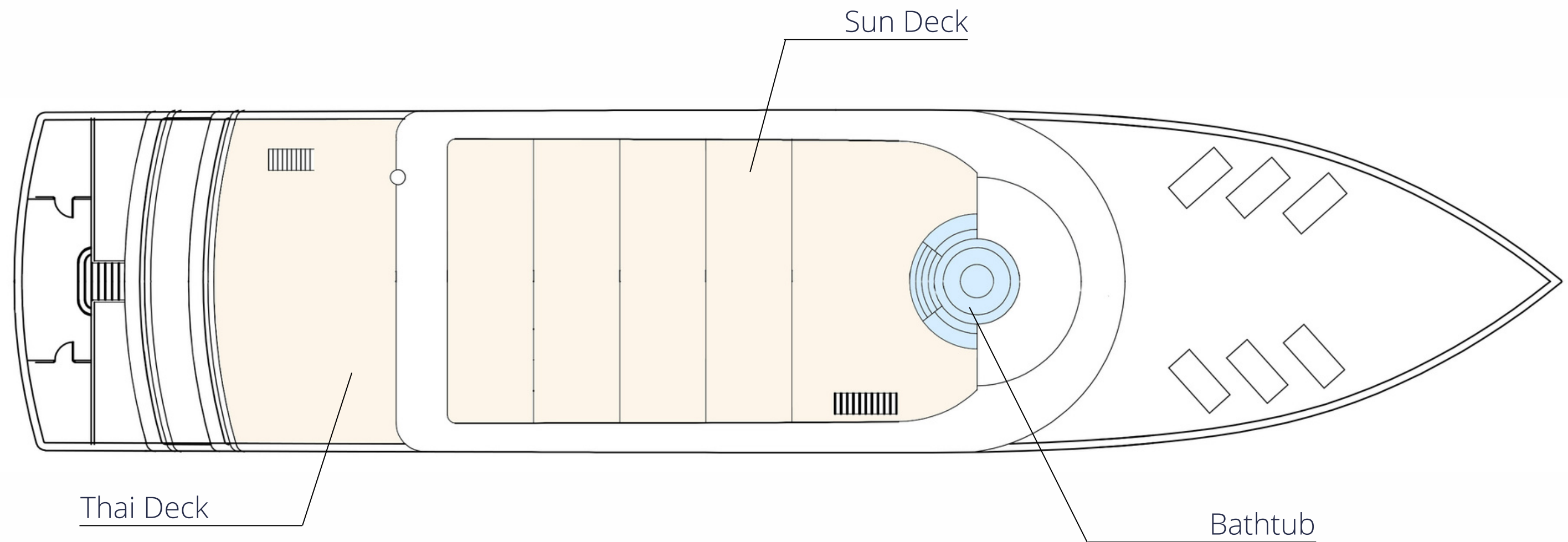
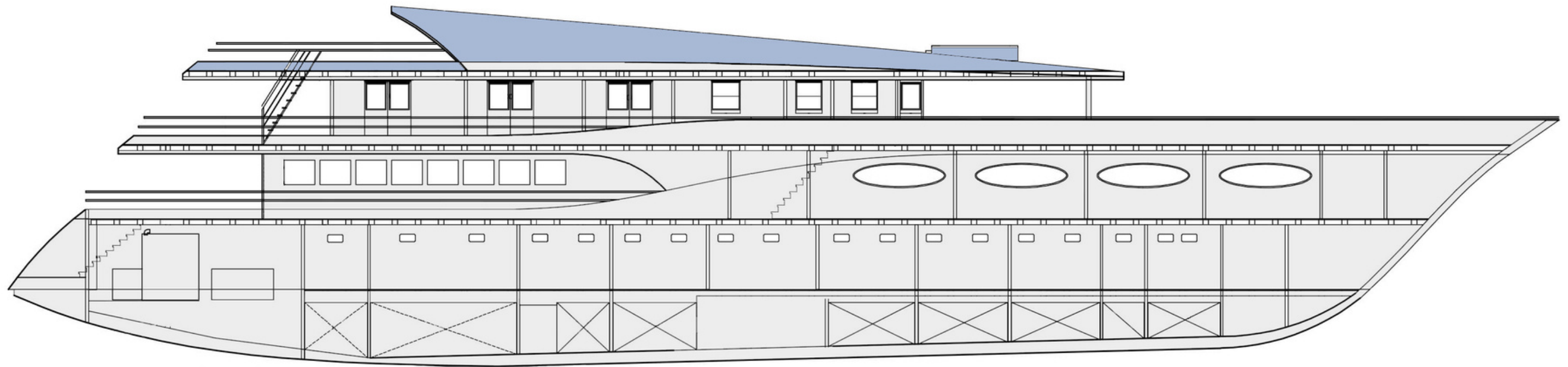
# Layout - Main Deck



# Layout - Spa Deck



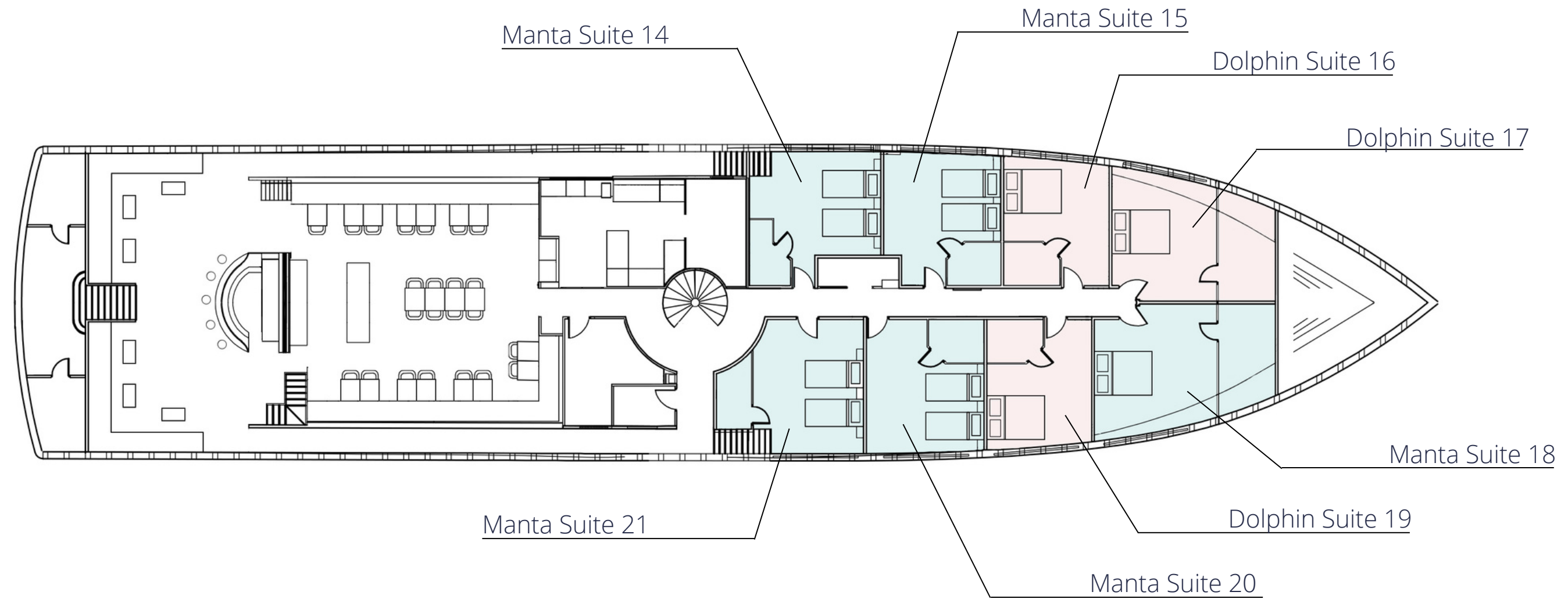
# Layout - Top Deck



# Suites Specification

 MANTA SUITE	 DOLPHIN SUITE	 COWRIE SUITE	 SEA STAR SUITE
Main Deck	Main Deck	Lower Deck	Lower Deck
En-Suite Bathroom	En-Suite Bathroom	En-Suite Bathroom	En-Suite Bathroom
Air-conditioning	Air-conditioning	Air-conditioning	Air-conditioning
Safety Box	Safety Box	Safety Box	Safety Box
Panoramic Window	Panoramic Window	Four Portholes	Two Portholes
215 ft <sup>2</sup> / 20 m <sup>2</sup>	172 ft <sup>2</sup> / 16 m <sup>2</sup>	172 ft <sup>2</sup> / 16 m <sup>2</sup>	140 ft <sup>2</sup> / 13 m <sup>2</sup>
King Bed or Twin (suite 14, 15, 20, 21) --- Queen Bed (suite 18)	Queen Bed (suite 16, 17, 19)	Queen Bed and Couch Bed (suite 7)	Queen Bed (suite 3, 4, 5, 6, 8, 9, 11) --- Queen Bed & Bunk Bed (suite 10)
5 available	3 available	1 available	8 available

# Guest Suites - Main Deck



# Guest Suites - Lower Deck

